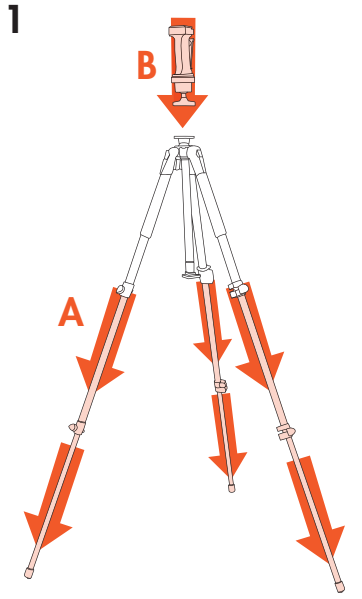


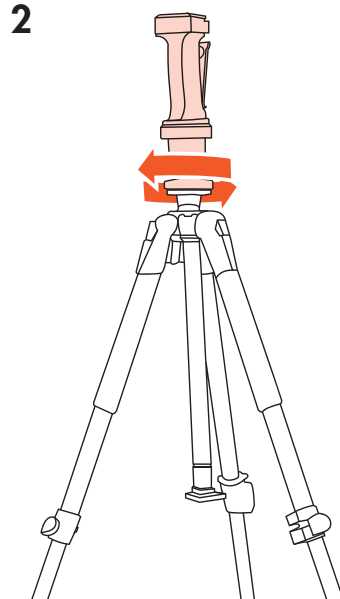
BLASTCAM™

HIGH SPEED CAMERA

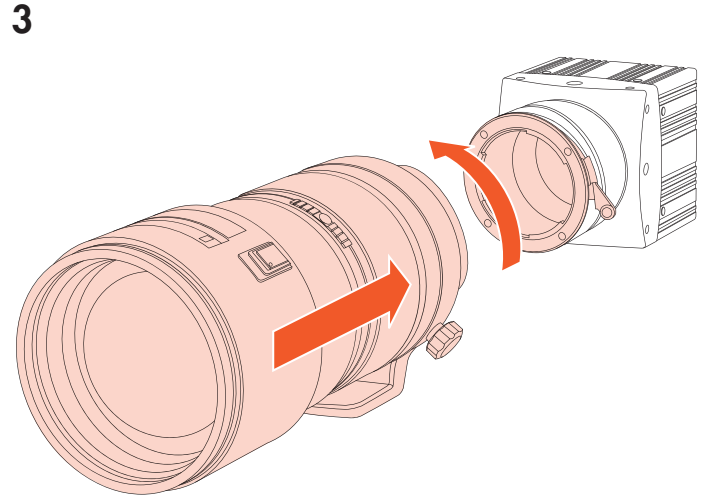
QUICK START GUIDE



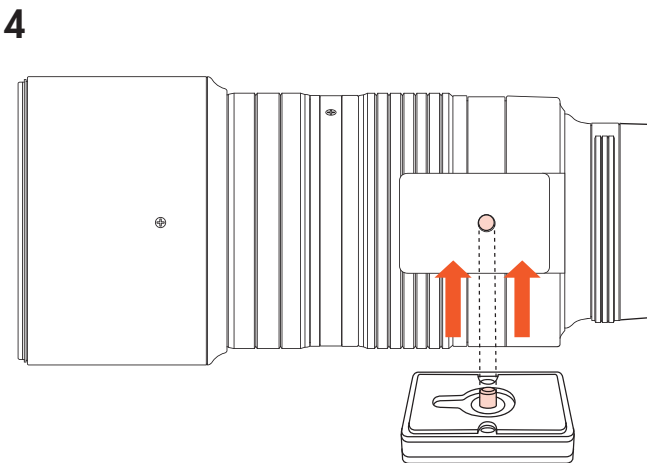
A: EXTEND TRIPOD LEGS.
B: POSITION GRIP BALL HEAD.



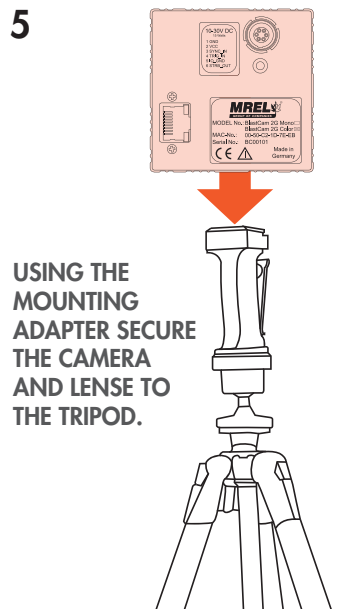
ROTATE GRIP BALL HEAD
UNTIL SECURE ON TRIPOD.



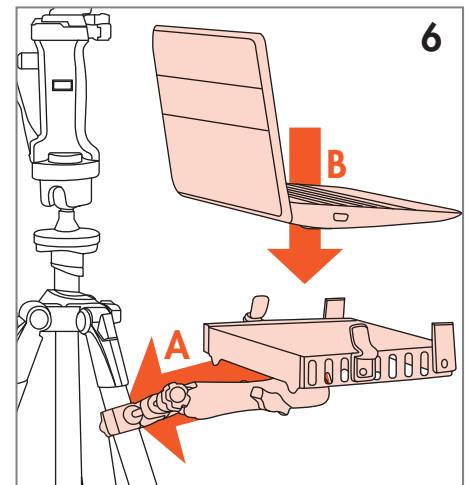
REMOVE THE LENS COVERS FROM BOTH THE CAMERA AND THE LENS THEN ATTACH THE CAMERA LENS TO THE CAMERA AND TWIST INTO PLACE.



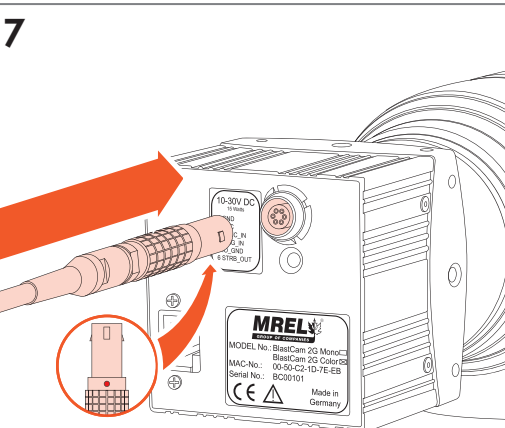
SECURE THE MOUNTING ADAPTER ON TO THE BOTTOM OF THE LENS. ENSURE A TIGHT FIT.



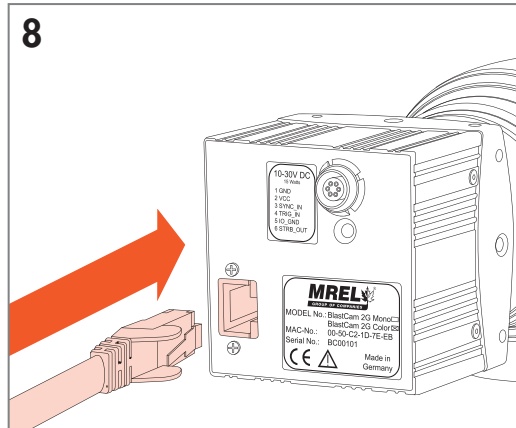
USING THE MOUNTING
ADAPTER SECURE
THE CAMERA
AND LENSE TO
THE TRIPOD.



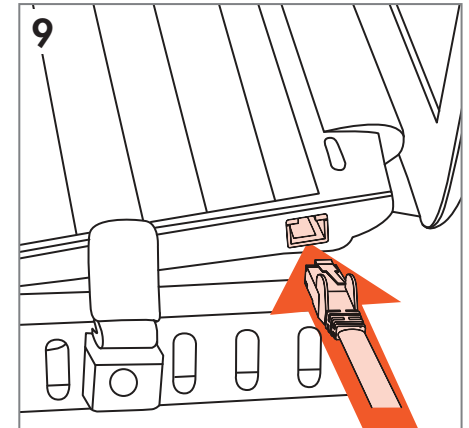
A: MOUNT THE BLASTCAM™
CONTROLLER MOUNT TO THE TRIPOD.
B: POSITION ON THE MOUNT THE
BLASTCAM™ CONTROLLER.



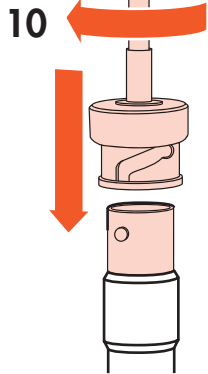
CONNECT THE BLASTCAM™ INPUT CABLE TO
THE BACK OF THE BLASTCAM™



CONNECT ONE END OF THE ETHERNET
COMMUNICATION CABLE TO THE BACK OF
THE BLASTCAM™



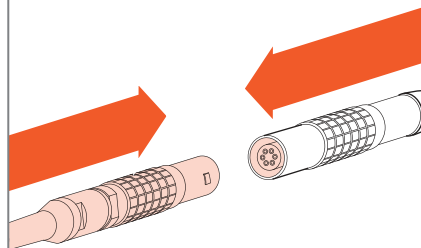
CONNECT THE OTHER END OF THE ETHERNET
COMMUNICATION CABLE TO THE BLASTCAM™ CONTROLLER



10

CONNECT THE TRIGGER CABLE TO THE INPUT CABLE.
(IF YOU DO NOT INTEND TO USE THE IMAGEBLITZ MOTION TRIGGER).

11



AC POWER: CONNECT THE POWER CABLE ADAPTOR TO THE INPUT CABLE.
DC POWER: CONNECT THE DC POWER CABLE TO THE INPUT CABLE.

16



PRESS THE TRIGGER BUTTON IF USING THE TRIGGER SWITCH OR IN THE BLASTCAM™ CONTROLLER SOFTWARE, THEN CLICK THE RECORD BUTTON TO START RECORDING.

12



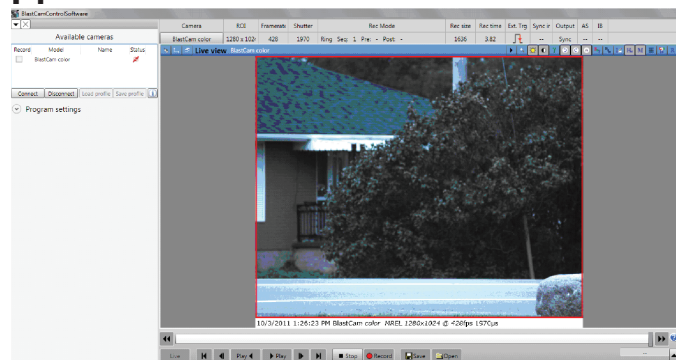
POWER ON THE BLASTCAM™ CONTROLLER

13



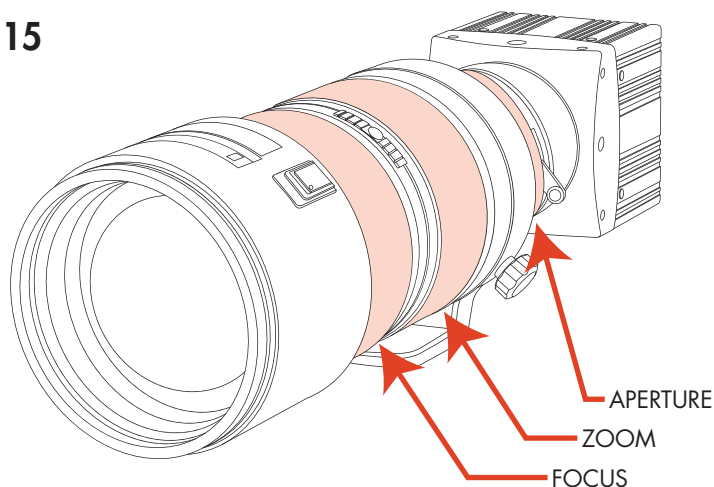
DOUBLE CLICK THIS ICON ON THE DESKTOP OF THE BLASTCAM™ CONTROLLER

14



THE FOLLOWING SCREEN WILL LOAD ON THE BLASTCAM™ CONTROLLER. SETUP THE RECORDING SPEED, RESOLUTION, AND TRIGGERING METHOD. CLICK THE LIVE BUTTON TO ENTER LIVE MODE.

15



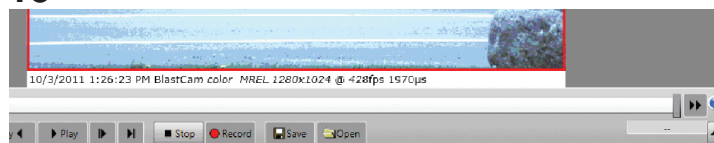
SET THE APERTURE TO THE LOWEST NUMBER AND THEN ADJUST THE ZOOM, APERTURE AND FOCUS ON THE LENS TO OBTAIN THE PERFECT PICTURE

17



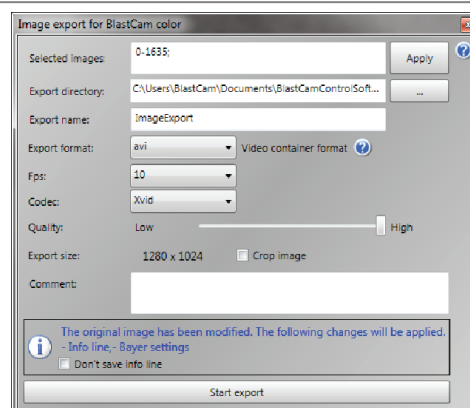
THE SUBJECT WILL BE VIDEO RECORDED.

18



POWER ON THE BLASTCAM™ CONTROLLER IF IT IS IN SLEEP MODE, PRESS RECONNECT BUTTON TO CONNECT IF NEEDED. THE USER CAN NOW PLAYBACK THE VIDEO FOR REVIEW.

19



THE USER CAN NOW PROCESS THE VIDEO AND/OR IMAGES AND EXPORT THE VIDEO AND/OR IMAGES.